

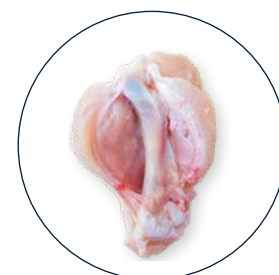
# Prime Wing Butterfly

The IFEC prime wing butterfly creates a lengthwise incision along the bone and cuts through essential muscles in order to open-up the meat.

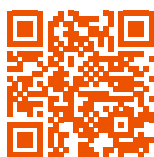


## KEY BENEFITS

- Adds value to your wing process
- The prime wing butterfly requires significant less cooking time and allows to have the same tenderness, temperature as on cooking midwings/flappers
- Ideal for “quick” grilling
- Gives a visual look as a larger product



Butterfly



Scan for more information

Size (L x W x H):	3300 mm x 1000 mm x 1500 mm 129,9" x 39,4" x 59,05"
Weight:	± 800 kg / 1.763,6 lb
Power consumption:	1 kW
Capacity:	± 6000 pcs/h